



CD21 rabbit mAb(ABT113R)

Catalog No	YP-Ab-15484
Isotype	IgG
Reactivity	Human
Applications	IHC;IF
Gene Name	CR2 C3DR
Protein Name	CD21
Immunogen	Synthesized peptide derived from human CD21
Specificity	This antibody detects endogenous levels of CD21 at Human
Formulation	Liquid in PBS containing 50% glycerol, 0.5% BSA and 0.02% sodium azide.
Source	Polyclonal, Rabbit,IgG
Purification	The antibody was affinity-purified from Cell supernatant by affinity-chromatography using specific immunogen.
Dilution	IHC-p 1:10. IF 1:50-200
Concentration	1 mg/ml
Purity	≥90%
Storage Stability	-20°C/1 year
Synonyms	Complement receptor type 2 (Cr2;Complement C3d receptor;Epstein-Barr virus receptor;EBV receptor;CD antigen CD21)
Observed Band	
Cell Pathway	Cell membrane ; Single-pass type I membrane protein.
Tissue Specificity	Mature B-lymphocytes, T-lymphocytes, pharyngeal epithelial cells, astrocytes and follicular dendritic cells of the spleen.
Function	disease:Genetic variations in CR2 are associated with susceptibility to systemic lupus erythematosus type 9 (SLEB9) [MIM:610927]. Systemic lupus erythematosus (SLE) is a chronic autoimmune disease with a complex genetic basis. SLE is an inflammatory, and often febrile multisystemic disorder of connective tissue characterized principally by involvement of the skin, joints, kidneys, and serosal membranes. It is thought to represent a failure of the regulatory mechanisms of the autoimmune system.,function:Receptor for complement C3Dd, for the Epstein-Barr virus on human B-cells and T-cells and for HNRPU. Participates in B lymphocytes activation.,similarity:Belongs to the receptors of complement activation (RCA) family.,similarity:Contains 15 Sushi (CCP/SCR) domains.,tissue specificity:Mature B-lymphocytes, T-lymphocytes, pharyngeal epithelial cells, astrocytes and follicular dendritic cells
Background	

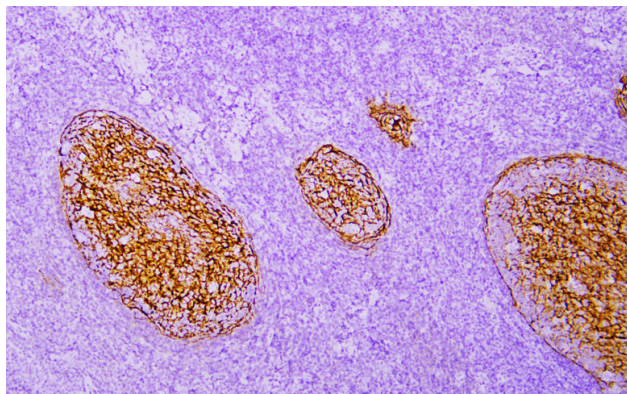
**matters needing attention**

Avoid repeated freezing and thawing!

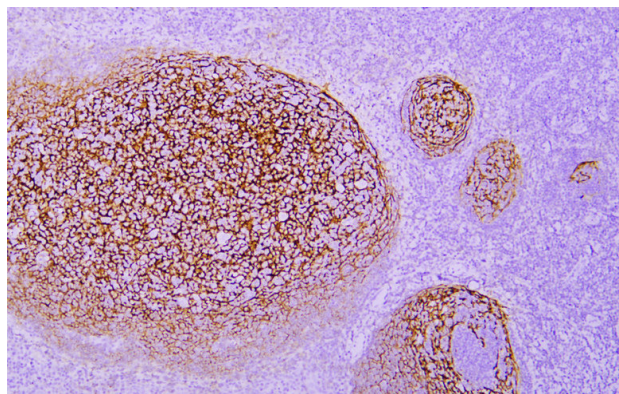
Usage suggestions

This product can be used in immunological reaction related experiments. For more information, please consult technical personnel.

Products Images



Immunohistochemical analysis of paraffin-embedded human Tonsil. 1, Antibody was incubated at 4° overnight. 2, Citrate buffer of pH6.0 was used for antigen retrieval. 3, Secondary antibody was diluted at 1:200(room temperature, 30min).



Immunohistochemical analysis of paraffin-embedded human Tonsil. 1, Antibody was incubated at 4° overnight. 2, Citrate buffer of pH6.0 was used for antigen retrieval. 3, Secondary antibody was diluted at 1:200(room temperature, 30min).